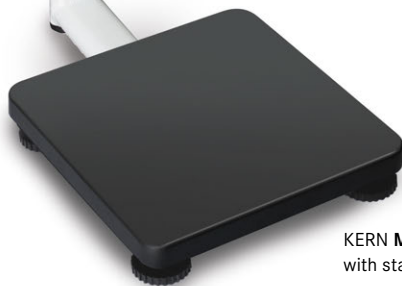


Personal floor scale KERN MPS

Professional personal floor scale with BMI function – with EC type approval class III
and approval for professional medical use in medical diagnostics



KERN MPS-PM
with stand



KERN MPS-M
with free-standing
display device

Your KERN specialist dealer



Features

- Verification class III (verification is optional)
- Approved as a medical device according to 93/42/EEC
- Thanks to its compact dimensions and the good price/performance ratio, this range is ideally suited for use in treatment rooms in doctor's surgeries and hospitals
- Ergonomic display device with large numerical keypad and high-contrast LCD display for easy entry and reading of patient data, such as, for example, the height for calculating the BMI
- Sturdy steel weighing plate with a non-slip and wear-resistant surface
- For easy and hygienic cleaning
- **1** Secure and non-slip positioning with height-adjustable rubber feet
- **1** Level indicator to level the balance precisely
- Hold function:
When patients do not stand completely still, a stable weight is calculated using an average weight and this is then "frozen". This means that you have sufficient time to attend to the patient first and then take the weight reading in peace

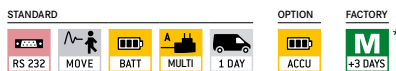
- BMI function to determine underweight/normal weight/surplus weight
- **2** Wall mount for display device
- Battery- or mains-powered, rechargeable battery operation optional

Technical data

- LCD display, digit height 25 mm
- Dimensions of weighing plate W×D×H 275×295×58 mm
- Dimensions of display device W×D×H 210×110×50 mm
- Only MPS-PM:
Overall dimensions (incl. stand) W×D×H 275×460×1015 mm
- Cable length of display device (only for models without a stand) approx. 120 cm
- Battery operation possible, 6× 1,5V AA, not included, operating time up to 57 h
- Mains adapter (external) included
- Data interface RS-232 standard
- Net weight MPS-M approx. 4.8 kg, MPS-PM approx. 6 kg

Accessories

- **3** Sturdy transport case to protect and store the scale, only for models without a stand, KERN MPS-A07
 - **4** Mechanical measuring stick, measuring range: 60–205 cm, can be screwed onto the column from the front or the back (MPS-PM) or wall-mounted, approved as a medical device according to 93/42/EEC, KERN MSF 200
 - Protective working cover over the display device, standard, can be re-ordered, scope of delivery: 5 items, KERN EOB-A02S05
 - Cleaning cloths, alcohol-free cloths for wipe disinfectant. Fulfill the legal requirements for occupational safety in accordance with TRGS 525/540. Packaging contents 80 pcs., size 20×22 cm per cloth, KERN MYC-01
 - Internal rechargeable battery pack, operating time up to 50 h, charging time approx. 24 h, KERN FOB-A08
 - Interface cable RS-232C to connect an external device, KERN MPS-A08
 - Matrix needle printer, KERN YKN-01
 - Label printer, KERN YKE-01
 - Thermal printer, KERN YKB-01N
- For more details see the internet



* Within the EU, official verification is mandatory by law for scales that are intended for use as a medical device. Please add this to your order. We require the location of use and the post code for the verification.

Model	Weighing range [Max] kg	Readout [d] kg	Verification value [e] kg	Mandatory by law Verification	
				KERN	965-129
MPS 200K100M	200	0,1	0,1	965-129	
MPS 200K100PM	200	0,1	0,1	965-129	

Pictograms

RS 232
Data interface RS-232:
To connect the balance to a printer, PC or network.

MOVE
Hold function: When patients do not stand, sit or lie completely still, a stable weight is calculated using an average weight.

BATT
Battery operation:
Ready for battery operation. The battery type is specified for each device.

ACCU
Rechargeable battery pack:
Rechargeable set.

MULTI
Universal mains adapter:
with universal input and optional input socket adapters for A) EU, GB; C) EU, GB, CH, USA, AUS.

M +3 DAYS
Verification possible:
The time required for verification is specified in the pictogram.

1 DAY
Package shipment:
The time required for internal shipping preparations is shown in days in the pictogram.